

Tutoriels MAX7219 avec matrice 8X8



Liens web tuto MAX7219

- [Montage Kit MAX7219 EN](#)
- [Montage Kstart:arduino:max7219:FRit MAX7219 FR](#)
- [Concevez des matrices de LED](#)
- [Tuto MAX7219 Arduino](#)
- [Matrice 8X8](#)
- [Tutoriel Arduino - MAX7219 Afficheur 8X8 LED](#)
- [MAX 7219](#)
- [LED Matrix Kit](#)
- [64 LEDS et MAX7219](#)
- [MAX7219 avec 4 matrices de LEDS 8X8 en cascade](#)
 - [Matrice LEDS 5 fois 8x8](#)
- [LEDS 8X8 par internet](#)
- [Une Video](#)

Programmes

Préparation Logiciels



Utiliser ou télécharger la dernière version de [l'IDE Arduino](#)

Le diagramme de synchronisation pour Max7219 et son format de données série sont joints ci-

dessous avec ses caractéristiques électroniques.

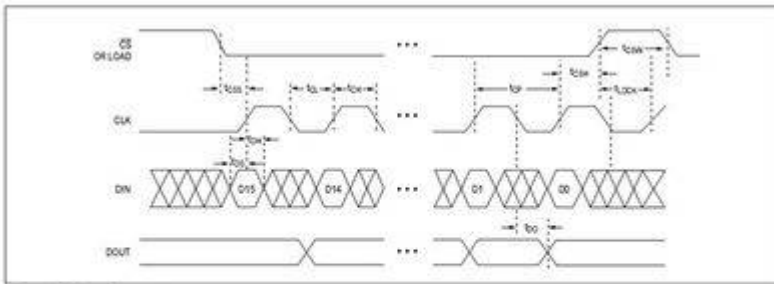


Figure 1. Timing Diagram

Table 1. Serial-Data Format (16 Bits)

D15	D14	D13	D12	D11	D10	D9	D8	D7	D6	D5	D4	D3	D2	D1	D0	
X	X	X	X	ADDRESS				MSB				DATA				LSB

ELECTRICAL CHARACTERISTICS (continued)

(V_{CC} = 5V ± 5%, R_{pull-up} = 10 kΩ ± 1%, T_A = Tamb to Tamb, unless otherwise noted.)

PARAMETER	SYMBOL	CONDITIONS	MIN	TYP	MAX	UNITS
LOGIC INPUTS						
Input Current (DIN, CLK, LOAD, CS)	I _{in} , I _i	V _{in} = 0V or V _H	-1	1		µA
Logic High Input Voltage	V _{IH}		3.5			V
Logic Low Input Voltage	V _{IL}			0.8		V
Output High Voltage	V _{OH}	I _O (DOUT, CS) = -1mA	V _{CC} - 1			V
Output Low Voltage	V _{OL}	I _O (DOUT, CS) = 1mA		0.4		V
Hysteresis Voltage	ΔV _I	DIN, CLK, LOAD, CS		1		V
TIMING CHARACTERISTICS						
CLK Clock Period	T _{clk}			100		ns
CLK Pulse Width High	T _{clkH}			50		ns
CLK Pulse Width Low	T _{clkL}			50		ns
CS Fall to SCLK Rise Setup Time (MAX7219 only)	T _{cs}			25		ns
CLK Rise to CS or LOAD Rise Hold Time	T _{clkH}			0		ns
DIN Setup Time	T _{din}			25		ns
DIN Hold Time	T _{din}			0		ns
Output Data Propagation Delay	t _{prop}	C _{LOAD} = 50pF			25	ns
Load-Rising Edge to Next-Clock-Rising Edge (MAX7219 only)	t _{load}			50		ns
Minimum CS or LOAD Pulse High	t _{csW}			50		ns
Data-to-Segment Delay	t _{data}				2.25	ms

Un programme de test sans librairie à inclure

[exemple_code_MAX7219.ino](#)

```

    unsigned char i;
    unsigned char j;
    /*Port Definitions*/
    int Max7219_pinCLK = 10;
    int Max7219_pinCS = 9;
    int Max7219_pinDIN = 8;

    unsigned char displ[38][8]={
    {0x3C,0x42,0x42,0x42,0x42,0x42,0x42,0x3C},//0
    {0x10,0x18,0x14,0x10,0x10,0x10,0x10,0x10},//1
    {0x7E,0x2,0x2,0x7E,0x40,0x40,0x40,0x7E},//2
    {0x3E,0x2,0x2,0x3E,0x2,0x2,0x3E,0x0},//3
    {0x8,0x18,0x28,0x48,0xFE,0x8,0x8,0x8},//4
    {0x3C,0x20,0x20,0x3C,0x4,0x4,0x3C,0x0},//5
    {0x3C,0x20,0x20,0x3C,0x24,0x24,0x3C,0x0},//6
    {0x3E,0x22,0x4,0x8,0x8,0x8,0x8,0x8},//7
    {0x0,0x3E,0x22,0x22,0x3E,0x22,0x22,0x3E},//8
    {0x3E,0x22,0x22,0x3E,0x2,0x2,0x2,0x3E},//9

```

```

{0x8,0x14,0x22,0x3E,0x22,0x22,0x22,0x22},//A
{0x3C,0x22,0x22,0x3E,0x22,0x22,0x3C,0x0},//B
{0x3C,0x40,0x40,0x40,0x40,0x40,0x3C,0x0},//C
{0x7C,0x42,0x42,0x42,0x42,0x42,0x7C,0x0},//D
{0x7C,0x40,0x40,0x7C,0x40,0x40,0x40,0x7C},//E
{0x7C,0x40,0x40,0x7C,0x40,0x40,0x40,0x40},//F
{0x3C,0x40,0x40,0x40,0x40,0x44,0x44,0x3C},//G
{0x44,0x44,0x44,0x7C,0x44,0x44,0x44,0x44},//H
{0x7C,0x10,0x10,0x10,0x10,0x10,0x10,0x7C},//I
{0x3C,0x8,0x8,0x8,0x8,0x8,0x48,0x30},//J
{0x0,0x24,0x28,0x30,0x20,0x30,0x28,0x24},//K
{0x40,0x40,0x40,0x40,0x40,0x40,0x40,0x7C},//L
{0x81,0xC3,0xA5,0x99,0x81,0x81,0x81,0x81},//M
{0x0,0x42,0x62,0x52,0x4A,0x46,0x42,0x0},//N
{0x3C,0x42,0x42,0x42,0x42,0x42,0x42,0x3C},//O
{0x3C,0x22,0x22,0x22,0x3C,0x20,0x20,0x20},//P
{0x1C,0x22,0x22,0x22,0x22,0x26,0x22,0x1D},//Q
{0x3C,0x22,0x22,0x22,0x3C,0x24,0x22,0x21},//R
{0x0,0x1E,0x20,0x20,0x3E,0x2,0x2,0x3C},//S
{0x0,0x3E,0x8,0x8,0x8,0x8,0x8,0x8},//T
{0x42,0x42,0x42,0x42,0x42,0x42,0x22,0x1C},//U
{0x42,0x42,0x42,0x42,0x42,0x42,0x24,0x18},//V
{0x0,0x49,0x49,0x49,0x49,0x2A,0x1C,0x0},//W
{0x0,0x41,0x22,0x14,0x8,0x14,0x22,0x41},//X
{0x41,0x22,0x14,0x8,0x8,0x8,0x8,0x8},//Y
{0x0,0x7F,0x2,0x4,0x8,0x10,0x20,0x7F},//Z
};

```

```

void Write_Max7219_byte(unsigned char DATA)
{
    unsigned char i;
    digitalWrite(Max7219_pinCS,LOW);
    for(i=8;i>=1;i--)
    {
        digitalWrite(Max7219_pinCLK,LOW);
        digitalWrite(Max7219_pinDIN,DATA&0x80);// Extracting a bit
data
        DATA = DATA<<1;
        digitalWrite(Max7219_pinCLK,HIGH);
    }
}

```

```

void Write_Max7219(unsigned char address,unsigned char dat)
{
    digitalWrite(Max7219_pinCS,LOW);
    Write_Max7219_byte(address); //address[]code of LED
    Write_Max7219_byte(dat); //data[]figure on LED
    digitalWrite(Max7219_pinCS,HIGH);
}

```

```
}

void Init_MAX7219(void)
{
  Write_Max7219(0x09, 0x00); //decoding BCD
  Write_Max7219(0x0a, 0x03); //brightness
  Write_Max7219(0x0b, 0x07); //scanlimit 8 LEDs
  Write_Max7219(0x0c, 0x01); //power-down mode 0 normal mode 1
  Write_Max7219(0x0f, 0x00); //test display 1 EOT display 0
}

void setup()
{
  pinMode(Max7219_pinCLK,OUTPUT);
  pinMode(Max7219_pinCS,OUTPUT);
  pinMode(Max7219_pinDIN,OUTPUT);
  delay(50);
  Init_MAX7219();
}

void loop()
{
  for(j=0;j<38;j++)
  {
    for(i=1;i<9;i++)
      Write_Max7219(i,displ[j][i-1]);
    delay(500);
  }
}
```

Programmes avec librairies à inclure

- afficheur8x8.zip
- max7219_dot_matrix_scroll_text.ino.zip
- web-scroll-matrix-master.zip
- max7219_100.ino.tar.gz

Librairies

Différentes librairies à tester

- [ledcontrol.zip](#)
- [ledcontrol-master.zip](#)
- [maxmatrix.zip](#)

Une librairie pour les matrices en cascade (à essayer ...)

- [ledcontrolms_f79uc7xhkcyjmgv.zip](#)

Une autre librairie mais pour le Raspberry (A voir lors d'une autre soirée ...)

- [luma.led_matrix-master_raspberry.zip](#)
- On peut y voir une demo en image animée...

Pour la création de codes pour matrices de LEDs

Envoyer par Fernand

[8x8 Matrix Character Creator](#)

Pour la création de caractères 8x8 sur la matrice de LEDs

- [Leds Matrice editor](#)
- Le programme qui va avec :
- [Programme pour matrice](#)

Toujours envoyer par Fernand : un programme de test, ne pas oublier d'inclure les 2 librairies ci-dessous

[Matrix 32x8 Max7219](#)



- - exemple 002 programme 32X8
 - [Librairie Adafruit_gfx](#)
 - [Librairie Max72xx](#)

Last update: 2023/01/27 16:08 start:arduino:max7219 <https://magenealogie.chanterie37.fr/www/fablab37110/doku.php?id=start:arduino:max7219&rev=1627310660>

From: <https://magenealogie.chanterie37.fr/www/fablab37110/> - **Castel'Lab le Fablab MJC de Château-Renault**

Permanent link: <https://magenealogie.chanterie37.fr/www/fablab37110/doku.php?id=start:arduino:max7219&rev=1627310660>

Last update: **2023/01/27 16:08**

